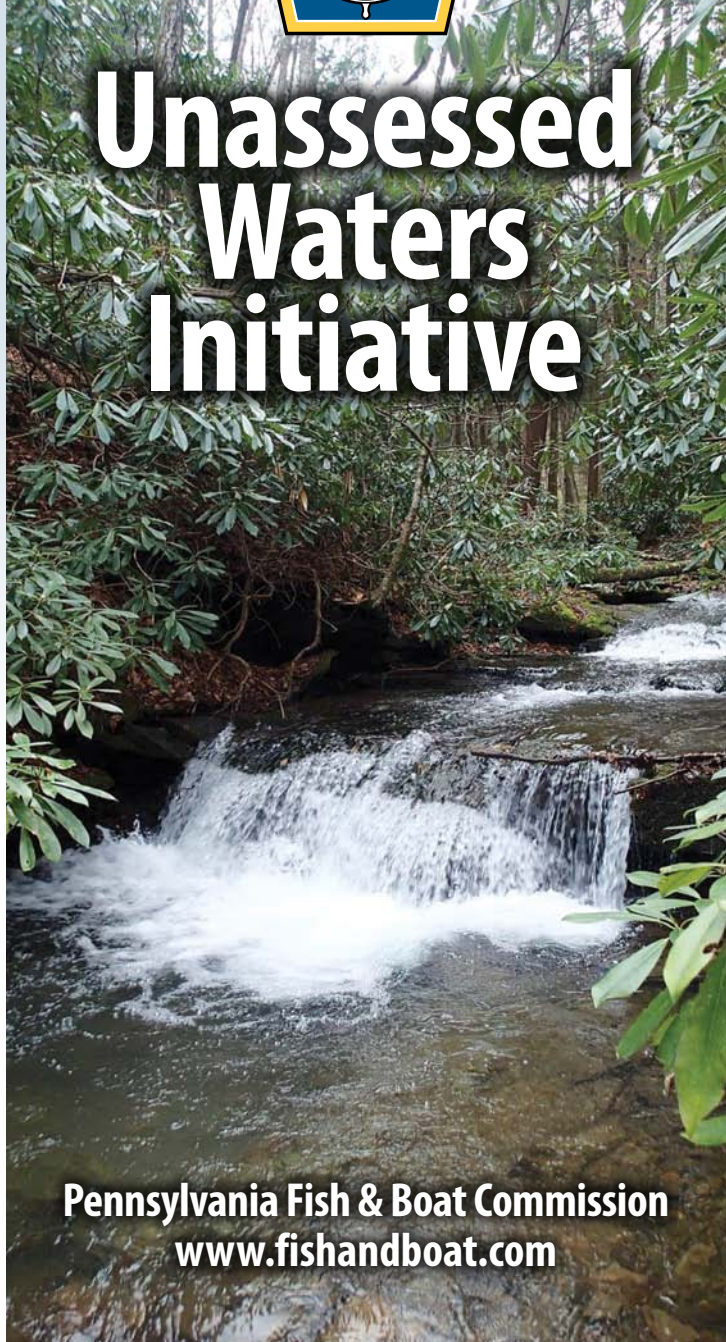




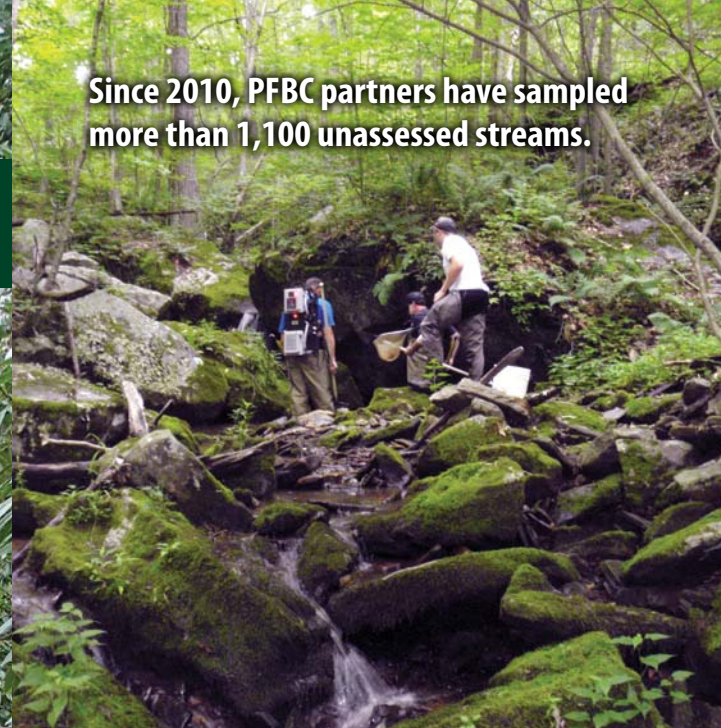
Partners sample previously unassessed waters using Pennsylvania Fish & Boat Commission sampling protocols.



Unassessed Waters Initiative



Since 2010, PFBC partners have sampled more than 1,100 unassessed streams.



Number of Streams Sampled

	2010	2011	2012
PFBC Partners	88	438	626
PFBC Staff	217	304	261
Total	305 (516 mi)	742 (1,762 mi)	887 (2,057 mi)

**3 Year Total - 1,934 Streams Sampled
4,335 Miles of Streams**

Since 2010, 217 new streams added to the wild trout list (617 miles)

Literature cited

Commonwealth of Pennsylvania, Pennsylvania Code, Title 25, Chapter 93. *Water Quality Standards.*

Commonwealth of Pennsylvania, Pennsylvania Code, Title 25, Chapter 105. *Dam Safety and Waterway Management.*

Commonwealth of Pennsylvania, Pennsylvania Code, Title 58, §57.11. *Listing of Wild Trout Streams.*

Pennsylvania Department of Environmental Protection. 2012. *Pennsylvania Integrated Water Quality Monitoring and Assessment Report.* PA DEP file report, Harrisburg, PA.

Pennsylvania Fish & Boat Commission (PFBC). 2009. *Strategic Plan for Management of Trout Fisheries in Pennsylvania 2010-2014.* Pennsylvania Fish & Boat Commission. Harrisburg, PA.

For more information, visit:

www.fishandboat.com/unassessedwaters.htm

or contact

Unassessed Waters Initiative Coordinator

Robert Weber

450 Robinson Lane

Bellefonte, Pennsylvania 16823

814-359-5164

Western Pennsylvania
Conservancy



Pennsylvania Fish & Boat Commission

www.fishandboat.com

Background

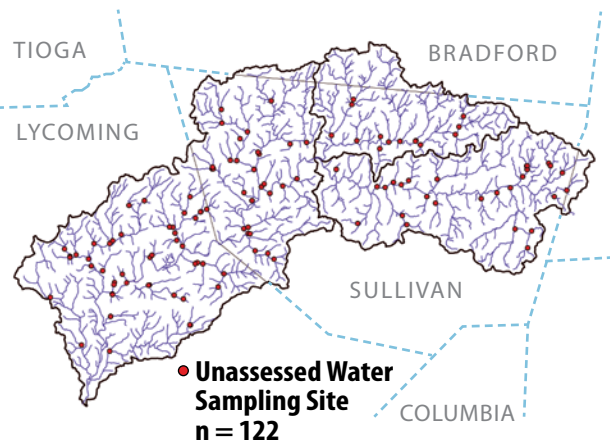
Pennsylvania is fortunate to have a vast flowing water resource. The Pennsylvania Department of Environmental Protection (DEP) estimates that there are 86,000 miles of streams within Pennsylvania's six major river basins (DEP 2012). Before the Unassessed Waters Initiative commenced, the Pennsylvania Fish & Boat Commission (PFBC) surveyed 3,175 Pennsylvania streams, comprising 21,654 miles. Of this total, there were 1,709 streams (9,372 miles) in which wild trout were documented by PFBC staff. There were another 1,702 streams (comprising 3,305 miles) that, by PFBC policy, were classified as wild trout streams, because they were upstream of documented wild trout waters (58 Pa. Code §57.11). This resulted in a total of 3,411 designated wild trout streams comprising 12,677 miles in the state of Pennsylvania (PFBC 2009).

Streams that contain a wild trout population qualify for more stringent environmental protection under several chapters of DEP's regulations. All Commonwealth waters have a designated use, which determines the protection standards that DEP uses to permit development activities within watersheds. Wild trout streams are protected by the water quality criteria associated with the Cold Water Fishes designation and depending upon the waterway's chemistry, biology, and/or social characteristics, streams may qualify for additional protection under the High Quality or Exceptional



Ninety-five percent of wild trout found are wild brook trout.

Loyalsock Creek Watershed



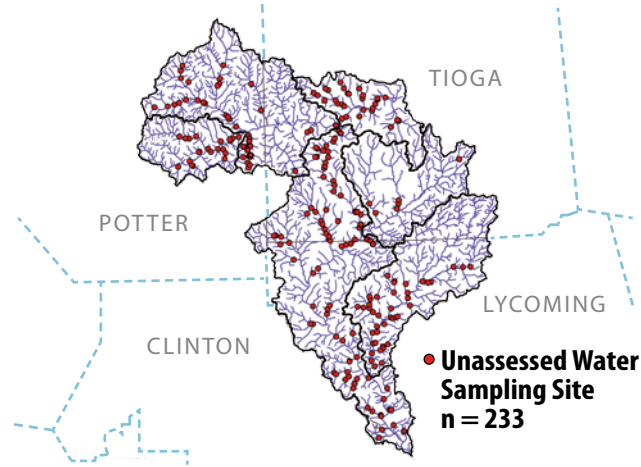
Value designation (25 Pa. Code Chapter 93). Wetlands that are located in or along the floodplain of wild trout streams are defined as Exceptional Value Wetlands and receive special protection (25 Pa. Code Chapter 105). Finally, instream activities are typically restricted during the fall of the year to protect spawning trout.

Although Pennsylvania contains nearly 62,000 streams, PFBC has only been able to



Students from Susquehanna University sampled streams in the Loyalsock Creek watershed in 2011 and 2012.

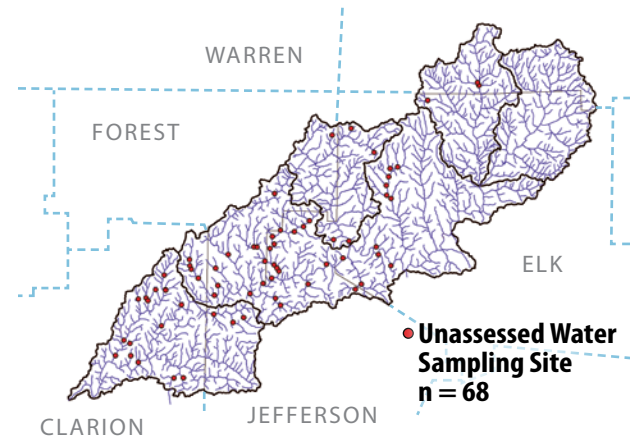
Pine Creek Watershed



conduct surveys and implement management strategies on 5,547 streams (totaling 24,511 miles). Therefore, only 9 percent of the streams and 29 percent of the total stream miles are being actively managed. While the amount of water surveyed may not seem like much compared to the total amount of available resource, an average of 163 new waters have been sampled and actively managed annually for the past 30 years. However, of the waters remaining, many likely support wild trout populations.

The primary threat to undocumented wild trout populations is inadequate water quality protection afforded to the streams through the DEP permitting process. The importance of adequately protecting streams has increased dramatically with the recent expansion of Marcellus Shale Gas Extraction throughout much of Pennsylvania. Proper stream classification is vital, as the likelihood that streams will be impacted by stressors will only increase in the future with additional pressure for resource extraction. The PFBC's statement

Upper Clarion River Watershed



of policy at 58 Pa. Code §57.11 states that “It is the policy of the Commission to accurately identify and classify streams supporting naturally reproducing populations of trout as wild trout streams.” This will continue to be a focus of future wild trout management in the Commonwealth.

The Unassessed Waters Initiative provides the opportunity to expand the number and miles of streams surveyed each year, beyond the time-constraints of PFBC staff. This is achieved through the examination of waters that have not been inventoried to date using qualified universities, research entities, and conservation organization partners to lead the surveys, in addition to PFBC staff. The outside groups sample previously unassessed waters using PFBC sampling protocols and are directed to work in watersheds determined to be “high priority.” The previously unassessed waters found to have wild trout are then proposed to PFBC for official listing and protection.



An average of 163 new waters have been sampled and actively managed annually for the past 30 years.



Wild trout have been found in over half of the unassessed streams surveyed.